

YOUR RELIABLE ENERGY SOLUTION PARTNER



Website



LinkedIn



Facebook



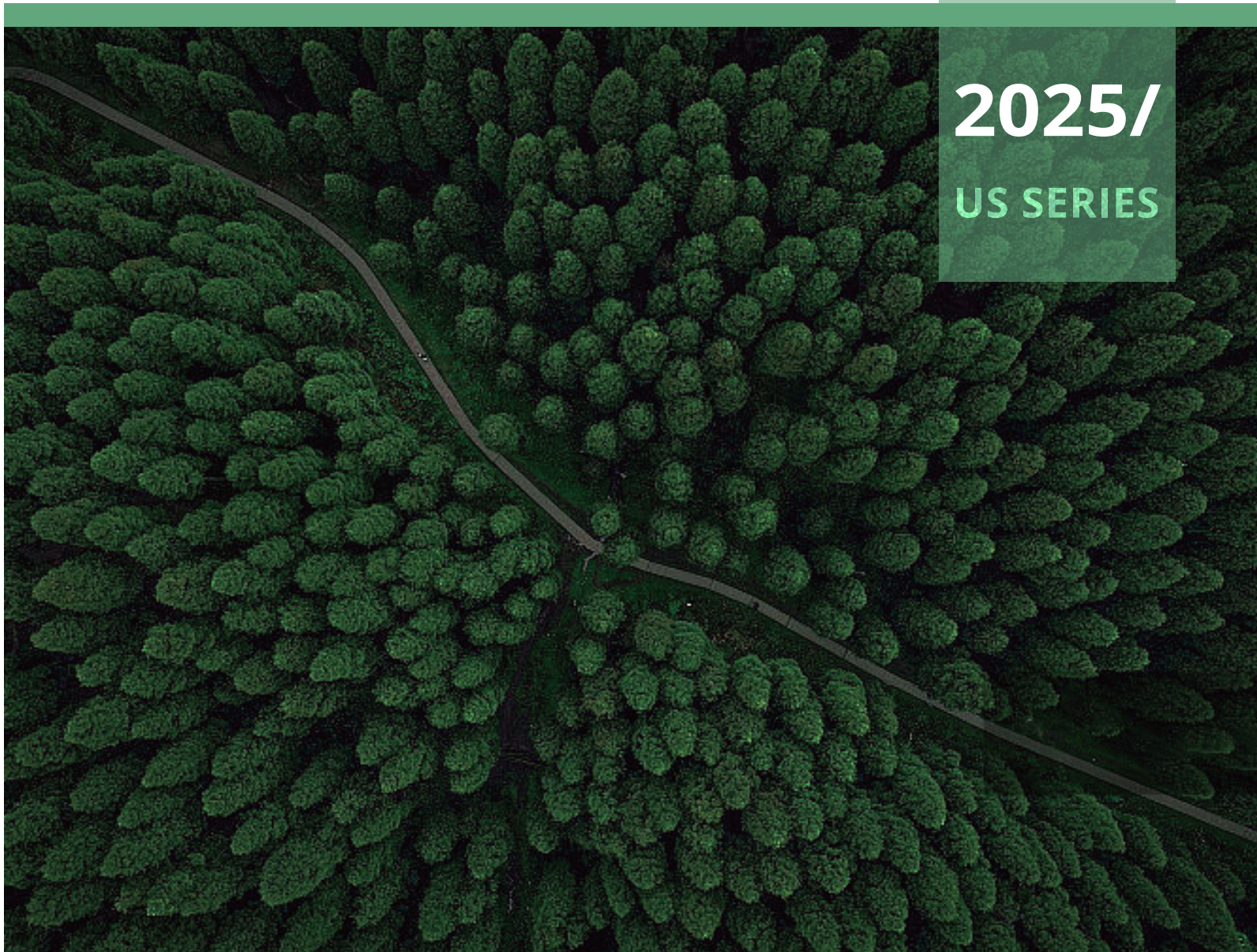
YouTube



Lux Power Technology Co., Ltd

Headquarter: +86 755 8520 9056
www.luxpowertek.com
Contact us: sales@luxpowertek.com

2025/
US SERIES



MARKET LAYOUT



300,000+
systems

25kW
Max.Power

30+
Country operations

100%
service coverage



LuxpowerTek, a solar inverter industry leader, brings over 20 years of expertise in designing intelligent energy solutions for both electrified and off-grid areas globally. With a strategic presence in major regions, LuxpowerTek has successfully installed over 300,000 solar inverter systems. Our user-centric approach prioritizes addressing concerns and feedback, ensuring continuous improvement. LuxpowerTek offers comprehensive, robust energy storage solutions for residential and commercial applications, shaping a sustainable energy future.

CATALOGUE

HYBRID SERIES

● SPLIT-PHASE



LXP-LB-US 5-10K **P03**



LXP-LB-US 12K **P05**



GEN-LB-US 13K **P07**



GEN-LB-US 16K **P09**



GEN-HB-US 25K **P11**

● THREE-PHASE



TriP2-LB-US-3P 5-10K **P13**



TriP2-HB-US-3P 6-15K **P15**

OFF-GRID



SNA-US 3K **P19**



SNA-US 6K **P21**



SNA-US 12-15K **P23**

PowerHub



PowerHub **P25**

HYBRID SERIES

Intelligent Working Modes

- Weather compensation and smart octopus charging packages
- Self consumption mode for high tariff areas
- Charge priority mode for areas where grid power is unstable
- Force charge & discharge mode for variable tariff integration

Smart EPS (Emergency Power Supply)

- Plug & Play integrated changeover, seamless switching under 20ms
- Auto backup power for critical load emergency supply

Intelligent Battery Integration

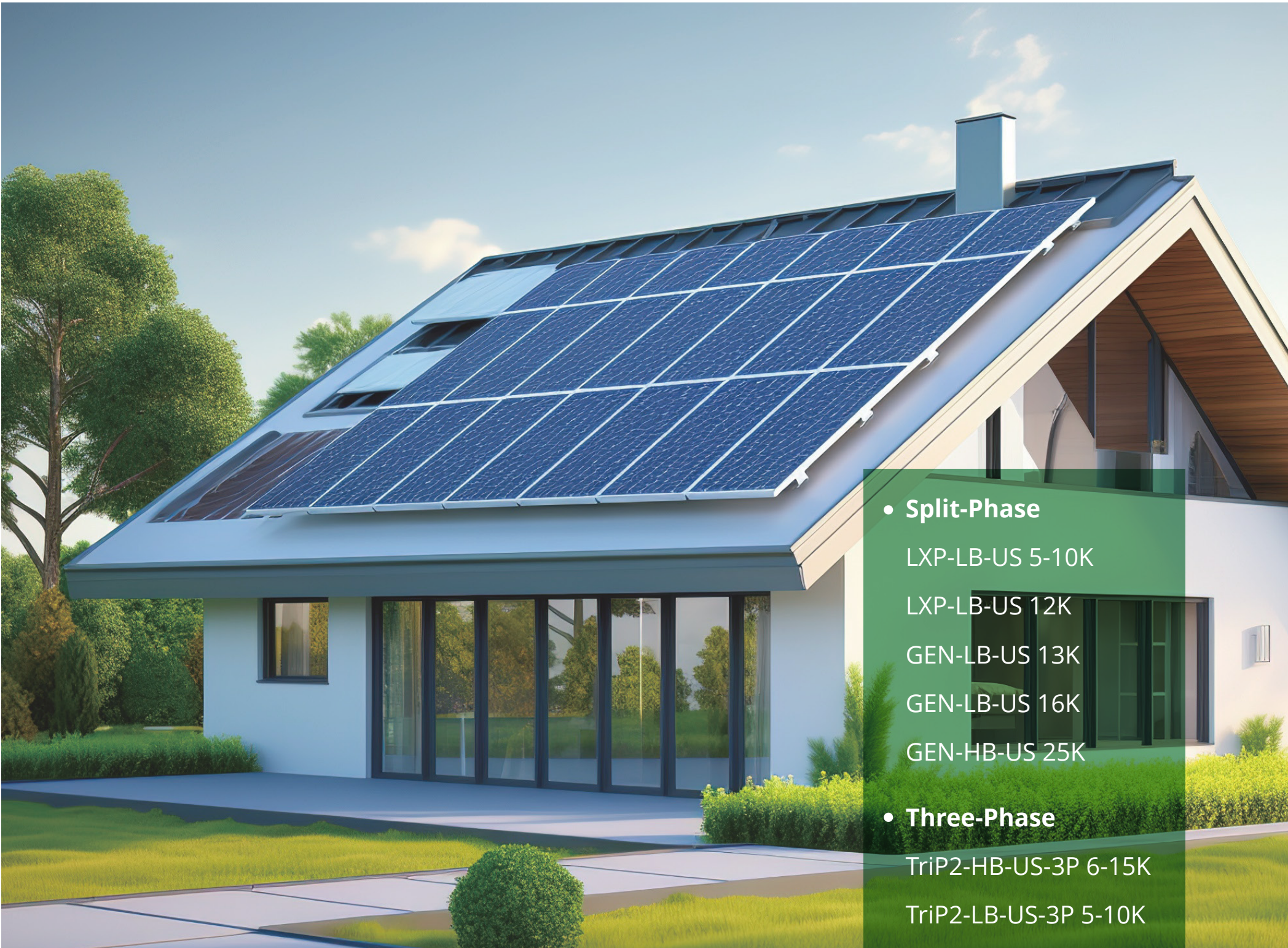
- Remote upgrade for battery management system (BMS) firmware
- Wide range of compatible battery brands
- Auto “wake-up” function of lithium battery from sleep mode
- Essential info uploaded to LUX server for quick ESS diagnosis
- Battery sharing with multi-inverters in single-phase or three-phase

Advanced Parallel Units (Parallel Versions)

- Up to 10 units parallel
- Single-phase and unbalanced three-phase paralleling

Key Features

- High PV input power
- High charge/discharge rates
- Light, fast & easy installation
- Free Wi-fi monitoring on mobile&PC
- Multi-phase output on different hybrid models
- Generator interface available



• Split-Phase

LXP-LB-US 5-10K

LXP-LB-US 12K

GEN-LB-US 13K

GEN-LB-US 16K

GEN-HB-US 25K

• Three-Phase

TriP2-HB-US-3P 6-15K

TriP2-LB-US-3P 5-10K

HYBRID SERIES

LXP-LB-US 5-10K

- 2 MPPTs with 4 strings input, Max. PV input 15kW
- Supports up to 10pcs in parallel for on/off grid
- On/off grid seamless switching
- Peak shaving function
- AFCI protection integrated
- Breakers (Grid, Gen, Load and Battery) are integrated
- Separate port for
 - Generator connection
 - Auto generator control
 - Support generator exercise
 - Support generator boost function
 - Or smart load connection and auto control
 - Or AC coupling function



Model	LXP-LB-US 5K		LXP-LB-US 8K	LXP-LB-US 10K
Input(PV DC)				
Max. PV input power (W)	8000		12000	15000
Rated PV input voltage (V)	360			
Number of independent MPPT inputs	2/(2:2)			
PV input voltage range (V)	100~600			
MPPT voltage range (V)	120~500			
Start-up voltage (V)	140			
Max. PV input current per MPPT (A)	25/25			
Max. PV short-circuit current input per MPPT (A)	31/31			
Battery				
Compatible battery type	Lithium-ion/Lead-Acid			
Rated battery voltage (V)	48			
Battery voltage range (V)	40~60			
Max. charging/discharging current (A)	115	167		210
Max. charging/discharging power (W)	5000	8000		10000
Force wake up battery from PV function	YES			
Gird				
Rated AC voltage(V)	120/240; 120/208			
Rated AC frequency (Hz)	60			
Rated AC output current	20.8A@240V/24A@208V	33.3A@240V/38.5A@208V		41.6A@240V/48A@208V
Rated AC output power (W)	5000	8000		10000
Max. AC intput curren (A)	40	63		63
PF	0.99 (Adjustable from 0.8 leading to 0.8 lagging)			
THDI	3%			
UPS				
Rated output power (W)	5000	8000		10000
Rated output voltage (V)	120/240; 120/208			
Rated output current (A)	20.8A@240V/24A@208V	33.3A@240V/38.5A@208V		41.6A@240V/48A@208V
Rated output frequency (Hz)	60			
Surge power, duration	2Pn, 0.5s			
Switching time	20ms			
Wave form	Sine wave			
THDV	<3%			
GEN				
Rated GEN voltage (V)	120/240; 120/208			
Rated GEN frequency (Hz)	60			
Rated GEN input current (A)	30			
Rated GEN input power (W)	7200			
Efficiency				
Max. MPPT efficiency	99.9%			
Max. efficiency	97.5%			
Battery charge/discharge efficiency	94.0%			
CEC efficiency	96.4%			
Protection				
PV reverse polarity protection	YES			
Over current/voltage protection	YES			
Anti-islanding protection	YES			
AC short-circuit protection	YES			
Leakage current protecion	YES			
DC switch	YES			
AC/DC surge protection	YES			
Rapid shut down	YES			
Grid/AFCI/RSD monitoring	YES			
Grid/GEN breaker (Current/Voltage)	63A/480V			
Load breaker (Current/Voltage)	63A/480V			
Battery breaker (Current/Voltage)	250A/80V			
General				
Dimensions (W*H*D)	520*750*285mm / 20.5*29.5*11.2 in			
Weight	50kg / 110lbs			
Ingress protection rating	IP65/NEMA 4X			
Relative humidity	0~100%			
Operating environment temperature range (°C)	-25~60°C, > 45°C Derating			
Storage temperature range (°C)	-25~60			
Display & Communication interface	Touch color screen, RS485/Wi-Fi/CAN			
Warranty	5/10 years			
Cooling method	Smart Cooling			
Topology	Transformer-less			
Altitude	<2000m			
Standards & Certification				

HYBRID SERIES

LXP-LB-US 12K

- 3 MPPTs with 4 strings input, Max. 18kW PV input
- 200A grid passthrough for whole home backup
- Supports up to 10pcs in parallel for on/off grid
- On/off grid seamless switching
- Peak shaving function
- AFCI protection integrated
- Separate port for
 - Generator connection
 - Auto generator control
 - Support generator exercise
 - Support generator boost function
 - Or smart load connection and auto control
 - Or AC coupling function



Model		LXP-LB-US 12K
Input(PV DC)		
Max. PV input power (W)		18000
Rated PV input voltage (V)		360
Number of independent MPPT inputs		3/(2:1:1)
PV input voltage range (V)		100~600
MPPT voltage range (V)		120~500
Start-up voltage (V)		140
Max. PV input current per MPPT (A)		25/15/15
Max. PV short-circuit current input per MPPT (A)		31/19/19
Battery		
Compatible battery type		Lithium-ion/Lead-Acid
Rated battery voltage (V)		48
Battery voltage range (V)		40~60
Max. charging/discharging current (A)		250
Max. charging/discharging power (W)		12000
Force wake up battery from PV function		YES
Grid		
Rated AC voltage(V)		240/208
Rated AC frequency (Hz)		60
Rated AC output current		50
Rated AC output power (W)		12000
Max. AC input current (A)		200
PF		0.99 (Adjustable from 0.8 leading to 0.8 lagging)
THDI		<3%
Max. continuous AC passthrough current (A)		200
GEN		
Rated GEN voltage (V)		120/240; 120/208
Rated GEN frequency (Hz)		60
Rated GEN input current (A)		62.5
Rated GEN input power (W)		15000
UPS		
Rated output power (W)		12000
Rated output voltage (V)		120/240; 120/208
Rated output current (A)		50
Rated output frequency (Hz)		60
Surge power, duration		2Pn, 0.5s
Switching time		20ms
Wave form		Sine wave
THDV		<3%
Efficiency		
Max. MPPT efficiency		99.9%
Max. efficiency		97.5%
Battery charge/discharge efficiency		94.0%
CEC efficiency		96.9%
Protection		
PV reverse polarity protection		YES
Over current/voltage protection		YES
Anti-islanding protection		YES
AC short-circuit protection		YES
Leakage current protection		YES
DC switch		YES
AC/DC surge protection		Type III
Rapid shut down		YES
Grid/AFCI/RSD monitoring		YES
Load breaker (Current/Voltage)		200A
Battery breaker (Current/Voltage)		2*200A/80V
General		
Dimensions (W*H*D)		520*870*285mm / 20.5*34.2*11.2 in
Weight		50kg / 110lbs
Ingress protection rating		IP65/NEMA 4X
Relative humidity		0~100%
Operating environment temperature range (°C)		-25~60°C, > 45°C Derating
Storage temperature range (°C)		-25~60
Display & Communication interface		Touch color screen, RS485/Wi-Fi/CAN
Warranty		5/10 years
Cooling method		Smart Cooling
Topology		Transformer-less
Altitude		<2000m
Standards & Certification		
UL 1741SA, UL 1741SB, CSA C22.2, UL 1741PCS CRD, CEC, FCC Part15B, IEEE 1547.1		

GEN-LB-US 13K

- 2 MPPTs with 4 strings input, Max. 21kW PV input
- Supports up to 10pcs in parallel for on/off grid
- Peak shaving function
- Auto start/stop, works with battery and PV for load support.
- AC coupling function to retrofit the existing grid-tied system
- Remote Monitoring & AI Optimization



Model	GEN-LB-US 13K
Input(PV DC)	
Max. PV array power (W)	21000
Max. PV input power (W)	18000
Rated PV input voltage (V)	360
Number of independent MPPT inputs	2/(2:2)
PV input voltage range (V)	100~550
MPPT voltage range (V)	120~440
Start-up voltage (V)	140
Max. PV input current per MPPT (A)	26/26
Max. PV short-circuit current input per MPPT (A)	31/31
Battery	
Compatible battery type	Lithium-ion/Lead-Acid
Rated battery voltage (V)	48
Battery voltage range (V)	40~60
Max. charging/discharging current (A)	208
Max. charging/discharging power (W)	10000
Force wake up battery from PV function	YES
AC Input/AC Output	
Rated AC voltage (V)	240 ; 208
Rated AC frequency (Hz)	50/60
Rated AC output power with PV (W)	13000@240V / 11200@208V
Rated AC output current with PV (A)	54
PF	0.99 (Adjustable from 0.8 leading to 0.8 lagging)
THDI	<3%
Max. continuous AC passthrough current (A)	90
GEN	
Rated GEN voltage (V)	240 ; 208
Rated GEN frequency (Hz)	50/60
Rated GEN input current (A)	62.5
Max. GEN input current (A)	80
Rated GEN input power (W)	15000
UPS	
Rated output power (W)	10000
Rated output voltage (V)	240 ;120/240 ; 120/208
Rated output current (A)	41.6@240V ; 48@208V
Rated output frequency (Hz)	50/60
Surge power, duration	2Pn, 0.5s
Switching time	20ms
Wave form	Sine wave
THDV	<3%
Efficiency	
Max. MPPT efficiency	99.9%
Max. efficiency	97.5%
Battery charge/discharge efficiency	94%
CEC efficiency	96.6%
Protection	
PV reverse polarity protection	YES
Over current/voltage protection	YES
Anti-islanding protection	YES
AC short-circuit protection	YES
Leakage current protecion	YES
DC switch	YES
AC/DC surge protection	Type III
Rapid shut down	YES
Grid/AFCI/RSD monitoring	YES
Load breaker	80A
Battery breaker	250A/80V
General	
Dimensions (W*H*D)	566*773*285mm / 22.3*30.4*11.2 in
Weight	55kg / 121.3 lbs
Ingress protection rating	IP66/NEMA 4X
Relative humidity	0~100%
Operating environment temperature range (°C)	-25~60°C, > 45°C Derating
Storage temperature range (°C)	-25~60
Display & Communication interface	Touch color screen, RS485/Wi-Fi/CAN
Warranty	5/10 years
Cooling method	Smart Cooling
Topology	Transformer-less
Altitude	<2000m
Standards & Certification	
UL 1741SA, UL 1741SB, CSA C22.2, CEC, FCC Part15B, IEEE 1547.1, HECO SRD V2.0	

HYBRID SERIES

GEN-LB-US 16K

- 3 MPPTs with 5 strings input, Max. 21kW PV input
- 200A grid passthrough for whole home backup
- Supports up to 16pcs in parallel for on/off grid
- Peak shaving function
- Auto start/stop, works with battery and PV for load support.
- AC coupling function to retrofit the existing grid-tied system
- Remote Monitoring & AI Optimization

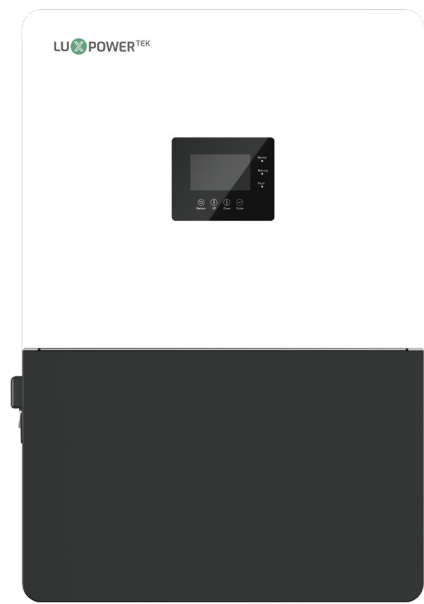


Model	GEN-LB-US 16K
Input(PV DC)	
Max. PV array power (W)	25000
Max. PV input power (W)	21000
Rated PV input voltage (V)	360
Number of independent MPPT inputs	3/(2:2:1)
PV input voltage range (V)	100~550
MPPT voltage range (V)	120~440
Start-up voltage (V)	140
Max. PV input current per MPPT (A)	26/26/15
Max. PV short-circuit current input per MPPT (A)	31/31/19
Battery	
Compatible battery type	Lithium-ion/Lead-Acid
Rated battery voltage (V)	48
Battery voltage range (V)	40~60
Max. charging/discharging current (A)	250
Max. charging/discharging power (W)	12000
Force wake up battery from PV function	YES
AC Input/AC Output	
Rated AC voltage (V)	240 ; 208
Rated AC frequency (Hz)	50/60
Rated AC output power (W)	16000@240V / 13800@208V
Rated AC output current (A)	66.7
PF	0.99 (Adjustable from 0.8 leading to 0.8 lagging)
THDI	<3%
Max. continuous AC passthrough current (A)	200
GEN	
Rated GEN voltage (V)	240 ; 208
Rated GEN frequency (Hz)	50/60
Rated GEN input current (A)	62.5
Max. GEN input current (A)	80
Rated GEN input power (W)	15000
UPS	
Rated output power (W)	12000
Rated output voltage (V)	240 ;120/240 ; 120/208
Rated output current (A)	50@240V ; 57.7@208V
Rated output frequency (Hz)	50/60
Surge power, duration	2Pn, 0.5s
Switching time	20ms
Wave form	Sine wave
THDV	<3%
Efficiency	
Max. MPPT efficiency	99.9%
Max. efficiency	97.5%
Battery charge/discharge efficiency	94.0%
CEC efficiency	96.9%
Protection	
PV reverse polarity protection	YES
Over current/voltage protection	YES
Anti-islanding protection	YES
AC short-circuit protection	YES
Leakage current protecion	YES
DC switch	YES
AC/DC surge protection	Type III
Rapid shut down	YES
Grid/AFCI/RSD monitoring	YES
Load breaker	200A
Battery breaker	400A/80V
General	
Dimensions (W*H*D)	566*893*285mm / 22.3*35.2*11.2 in
Weight	57kg / 125.7 lbs
Ingress protection rating	IP66/NEMA 4X
Relative humidity	0~100%
Operating environment temperature range (°C)	-25~60°C, > 45°C Derating
Storage temperature range (°C)	-25~60
Display & Communication interface	Touch color screen, RS485/Wi-Fi/CAN
Warranty	5/10 years
Cooling method	Smart Cooling
Topology	Transformer-less
Altitude	<2000m
Standards & Certification	
UL 1741SA, UL 1741SB, CSA C22.2, CEC, FCC Part15B, IEEE 1547.1, HECO SRD V2.0	

HYBRID SERIES

GEN-HB-US 25K (High Voltage)

- 120/240 split-phase output 25kW
- 6 MPPTs with 8 strings, Max. 48kW PV input
- Working with High Voltage Battery
- Whole House Backup with 200A Output
- Supports up to 6 units in Parallel
- Optimized for Small C&I and High Energy Demand Households



Model	GEN-HB-US 25K
Input(PV DC)	
Max. PV input power (W)	48000
Rated PV input voltage (V)	360
Number of independent MPPT inputs	6(A:2/B:2/C:1/D:1/E:1/F:1)
PV input voltage range (V)	120~600
MPPT voltage range (V)	120~480
Start-up voltage (V)	120
Max. PV input current per MPPT (A)	34/34/17/17/17/17
Max. PV short-circuit current input per MPPT (A)	50/50/30/30/30/30
Battery	
Compatible battery type	Lithium-ion/Lead-Acid
Rated battery voltage (V)	400
Battery voltage range (V)	120~454.4
Max. charging/discharging current (A)	100
Max. charging/discharging power (W)	25000
Force wake up battery from PV function	YES
Grid	
Rated AC voltage (V)	120/240, 120/208
Rated AC frequency (Hz)	60
Rated AC output current (A)	104
Rated AC output power (W)	25000/21600
Max. AC input current (W)	104
PF	0.99 (Adjustable from 0.8 leading to 0.8 lagging)
THDI	<5%
Max. continuous AC passthrough current (A)	104/Split bypass 200A
GEN	
Rated GEN voltage (V)	120/240, 120/208
Rated GEN frequency (Hz)	60
Rated GEN input current (A)	104
Rated GEN input power (W)	25000
EPS Output - with Battery	
Rated output power (W)	25000
Rated output voltage (V)	120/240, 120/208
Rated output current (A)	104
Rated output frequency (Hz)	60
Surge power, duration	2Pn/1s, 1.5Pn/30s
Switching time	<15ms
Wave form	Sine wave
THDV	<3%
Efficiency	
Max. MPPT efficiency	98.0%
Max. efficiency	94.0%
Battery charge/discharge efficiency	96.0%
Protection	
Anti-islanding Protection	YES
AC Short-circuit Protection	YES
Leakage Current Protection	YES
Grid Monitoring	YES
PV DC Switch	YES
Grid/Load/Generator/Smart Load Breaker integrated	YES
Battery/PV reverse polarity protection	YES
Over Current/Voltage Protection	YES
PV Insulation Detection	YES
Battery Soft Start Protection	YES
SPD Protection	YES
AFCI/RSD protection	YES
GFCI	YES
General	
Dimensions (W*H*D)	626*924*285 mm / 24.7*36.4*11.2 in
Weight	60kg / 132.28lbs
Ingress protection rating	IP65/NEMA 4X
Display	LCD
Topology	Tranformer-less
Ambient Temperature Range	-25~60°C(>45°C, output derating)
Standby Losses	10W Sleep Mode, 30W Standby Mode
Cooling	Smart Cooling
Relative Humidity Range	0~100%
Max. Operating Altitude	2000m
Noise	55dB
Communication from Inverter	SunSpec Modbus RTU over RS485, RJ45 for ext Wifi Dongle
Standards & Certification	
UL 1741SA, UL 1741SB, CSA C22.2, CEC, IEEE 1547.1, HECO SRD V2.0	

TriP2-HB-US-3P 6-15K (Three-Phase)

- Max. 3 MPPTs and Max. PV input 22.5kW
- 150% unbalanced output, Max.7.5kW per phase
- Battery working range: 100~700V
- Max. 15kW UPS output
- 120/208V three-phase output
- Supports up to 10pcs in parallel for on/off grid
- Dedicated GEN port for
 - Auto GEN control
 - Smart load function
 - AC coupling function



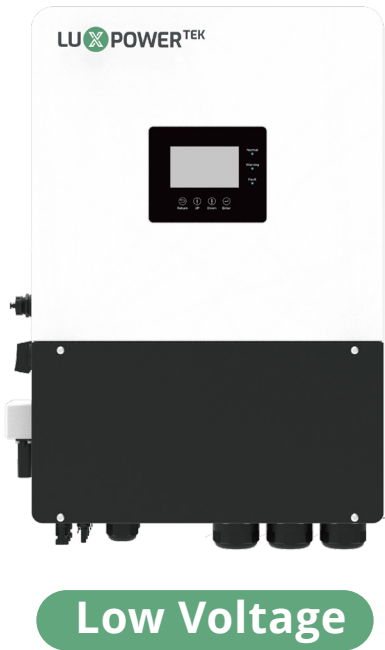
High Voltage



Model	TriP2-HB-US-3P 6K	TriP2-HB-US-3P 8K	TriP2-HB-US-3P 10K	TriP2-HB-US-3P 12K	TriP2-HB-US-3P 15K
Input (PV DC)					
Max. PV input power (W)	9000	12000	15000	18000	22500
Rated PV input voltage (V)	690				
Number of independent MPPT inputs	2/(2:2)			3/(2:2:2)	
Max. PV input voltage (V)	1000				
MPPT voltage range (V)	200~900				
Start-up voltage (V)	100				
Max. PV input current per MPPT (A)	20/20		40/40/40		
Max. PV short-circuit current input per MPPT	25/25		50/50/50		
Battery					
Compatible battery type	Lithium-ion/Lead-Acid				
Rated battery voltage (V)	400				
Battery voltage range (V)	100~800				
Max. charging voltage (V)	800				
Max. charging/discharging current (A)	50			75	
Max. charging/discharging power (W)	6000	8000	10000	12000	15000
Force wake up battery from PV function	YES				
Grid					
Rated AC voltage (V)	3L/N/PE, 120/208Vac				
Rated AC frequency (Hz)	50/60				
Rated AC output current (A)	16.7	22.2	27.8	33.3	41.7
Rated AC output power (W)	6000	8000	10000	12000	15000
Max. AC intput current (A)	25.0	33.3	41.7	50.0	62.5
PF	0.99 (Adjustable from 0.8 leading to 0.8 lagging)				
THDI	<3%				
Max. continuous AC passthrough current (A)	75				
GEN					
Rated GEN voltage (V)	3L/N/PE, 120/208Vac				
Rated GEN frequency (Hz)	50/60				
Rated GEN input current (A)	30				
Rated GEN input power (W)	20700				
UPS					
Rated output power (W)	6000	8000	10000	12000	15000
Rated output voltage (V)	3L/N/PE, 120/208Vac				
Rated output current (A)	16.7	22.2	27.8	33.3	41.7
Rated output frequency (Hz)	50/60				
Surge power, duration	1.5Pn, 10s				
Switching time	20ms				
Wave form	Sine wave				
THDV	<3%				
Efficiency					
Max. efficiency	97.4%				
Max. charge/discharge efficiency	97.2%				
Protection					
PV reverse polarity protection	YES				
Over current/voltage protection	YES				
Anti-islanding protection	YES				
AC Short-circuit protection	YES				
Leakage current protecion	YES				
Grid monitoring	YES				
DC switch	YES				
Ingress protection	YES				
DC Surge protection	Type III				
AC Surge protection	Type III				
General					
Dimensions (W*H*D)	480*703*258mm / 18.9*27.7*10.2 in				
Weight	TBD			50kg / 110.2lbs	
Ingress protection rating	IP66				
Operating environment temperature range (°C)	-25~60				
Storage temperature range (°C)	-40~70				
Relative humidity	0~100%				
Display & Communication interface	Touch color screen, RS485/Wifi/CAN				
Warranty	5/10 years				
Cooling method	Natural cooling			Smart cooling	
Topology	Transformer-less				
Altitude(m)	<2000				
Noise emission (typical)	<50dB				
Standards & Certification					

TriP2-LB-US-3P 5-10K (Three-Phase)

- Supports independent grid export control for each phase
- Max. 3 MPPTs, Max. PV input: 15kW
- Compatible with 48V low-voltage battery systems
- 120/208V three-phase output
- Time of use, 8 time periods for charging & discharging
- Max. 10 pcs parallel for on grid &off grid
- Dedicated GEN port for
 - Auto GEN control
 - Smart load function
 - AC coupling function



Model	TriP2-LB-US-3P 5K	TriP2-LB-US-3P 6K	TriP2-LB-US-3P 8K	TriP2-LB-US-3P 10K
Input (PV DC)				
Max. PV input power (W)	7500	9000	12000	15000
Rated PV input voltage (V)	690			
Number of independent MPPT inputs	3/(1:1:1)			
Max. PV input voltage (V)	1000			
MPPT voltage range (V)	200~900			
Start-up voltage (V)	100			
Max. PV input current per MPPT (A)	20/20			
Max. PV short-circuit current input per MPPT	25/25			
Battery				
Compatible battery type	Lithium-ion/Lead-Acid			
Battery voltage range (V)	40-60			
Max. charging/discharging current (A)	125	150	200	220
Max. charging/discharging power (W)	5000	6000	8000	10000
Charging Strategy for Li-ion Battery	Self-adaption to BMS			
Input AC (Grid)				
Input voltage range	3L/N/PE, 120/208Vac			
Rated AC frequency (Hz)	50/60			
Max. AC input power (W)	6250	7500	10000	12500
Max. AC input current	17.4	20.8	27.8	34.7
Output AC (Grid)				
Rated AC voltage (V)	3L/N/PE, 120/208Vac			
Rated AC frequency (Hz)	50/60			
Rated AC output power (W)	5000	6000	8000	10000
Rated AC output current (A)	13.9	16.7	22.2	27.8
PF	0.99(Adjustable from 0.8 leading to 0.8 lagging)			
THDI	< 3%			
Max. continuous AC passthrough current (A)	30			50
GEN				
Rated GEN voltage (V)	3L/N/PE, 120/208Vac			
Rated GEN frequency (Hz)	50/60			
Rated GEN input current (A)	30			
Rated GEN input power (W)	20700			
UPS				
Rated output power (W)	5000	6000	8000	10000
Rated output voltage (V)	3L/N/PE, 120/208Vac			
Rated output current (A)	13.9	16.7	22.2	27.8
Rated output frequency (Hz)	50/60			
Surge power, duration	1.5Pn, 10s			
Switching time	20ms			
Wave form	Sine wave			
THDV	<3%			
Efficiency				
Max. efficiency	97.70%			
Max. charge/discharge efficiency	94.0%			
Protection				
PV reverse polarity protection	YES			
Over current/voltage protection	YES			
Anti-islanding protection	YES			
AC Short-circuit protection	YES			
Leakage current protecion	YES			
Grid monitoring	YES			
DC switch	YES			
Ingress protection	YES			
DC Surge protection	Type III			
AC Surge protection	Type III			
General				
Dimensions(W*H*D)	480*703*258mm / 18.9*27.7*10.2 in			
Weight	TBD			
Ingress protection rating	IP66			
Operating environment temperature range(°C)	-25~+60, >45°C derating			
Storage temperature range(°C)	-25~+60			
Relative humidity	0~100%			
Display & Communication interface	Touch color screen, RS485/Wifi/CAN			
Warranty	5/10 years			
Cooling method	Smart cooling			
Topology	Transformer-less			
Altitude(m)	<2000			
Noise emission(typical)	<50dB			
Standards & Certification				

ECO HYBRID / OFF-GRID

- SNA US 3K
- SNA US 6K
- SNA US 12-15K

The ultimate pick for off-grid applications, empowering energy independence. seamlessly switching between on and off-grid modes, it's tailored for remote regions and unstable power scenarios, enabling direct off-grid usage.

OUR CORE FEATURES

16pcs Parallel

With 16 units designed for parallel connections, this solution offers enhanced efficiency and flexibility for your power conversion needs. Whether you're integrating solar panels, batteries, or other renewable energysources, "16pcs Parallel" ensures seamless operation and optimized performance. Whether you're a professional or a DIY enthusiast, this product will beyour ideal choice.

Three-phase system with variable loads on each phase

Introducing our parallelized three-phase system, where each phase may have adifferent load. This state-of-the-art solution offers unmatched flexibility and efficiency for power distribution across diverse environments. Whether you're overseeing industrial machinery, commercial facilities, or residential grids, oursystem seamlessly adapts to varying loads on each phase. With robust performance and precise load management capabilities, it's perfect for optimizing energy usage and ensuring a dependable power supply.

Separate Generator Port Available

This addition expands the diversity of energy independence options by providing additional flexibility in power source selection, Whether you're incorporatingsolar panels, batteries, or generators, our system offers seamless integrationand optimized performance. With its adaptable design and expanded options,it's the ideal solution for diversifying energy sources and ensuring reliablepower supply in various scenarios.

480V High Voltage PV Input

With this capability, our system allows for the integration of as many solarpanels as possible, optimizing energy generation potential. Whether forresidential, commercial, or industrial applications, this feature ensures efficient utilization of solar resources and enhanced energy output. Say goodbye to limitations and hello to unparalleled solar power flexibility with our high PV voltage input.

SNA US 3K

- 120V off-grid output
- Supports up to 16 units in parallel
- Maximum PV input voltage: 500V
- 2 MPPTs, maximum PV input: 8kW
- Maximum charge and discharge current: 70A
- Dedicated generator port
- AC coupling or intelligent charge management



Model	SNA US 3K
Input(PV DC)	
Max. PV input power (W)	8000(4000/4000)
Rated PV input voltage (V)	320
Number of independent MPPT inputs	2/(1:1)
PV input voltage range (V)	100~500
MPPT voltage range (V)	120~385
Start-up voltage (V)	100
Max. PV input current per MPPT (A)	17/17
Max. PV short-circuit current input per MPPT (A)	25/25
Battery	
Compatible battery type	Lithium-ion/Lead-Acid
Rated battery voltage (V)	48
Battery voltage range (V)	38.4~60
Max. charging/discharging current (A)	70
Max. charging/discharging power (W)	3000
Force wake up battery from PV function	YES
Force wake up battery from Grid function	YES
Grid	
Rated AC voltage(V)	120
Rated AC frequency (Hz)	50/60
Max. AC input current (A)	40
Max. AC input power (W)	4500
Max. continuous AC passthrough current (A)	60
GEN	
Rated GEN voltage (V)	120
Rated GEN frequency (Hz)	50/60
Rated GEN input current (A)	32
Rated GEN input power (W)	3840
UPS	
Rated output power (W)	3000
Rated output voltage (V)	120
Rated output current (A)	25
Rated output frequency (Hz)	50/60
Surge power, duration	2Pn, <2s
Switching time	<10ms@Single/<20ms@Parallel
Wave form	Sine wave
THDV	<3%
Efficiency	
Max. MPPT efficiency	99.9%
Max. efficiency	93.0%
Max. charge/discharge efficiency	93.0%
Protection	
Over current/voltage protection	YES
AC short-circuit current protection	YES
Grid monitoring	YES
AC Surge protection	Type III
Battery reverse polarity protection	YES
DC switch	YES
PV Arc Fault Detection	YES
General	
Dimensions (W*H*D)	330*505*135mm / 13*19.9*5.3 in
Weight	14.5kg/31.97lbs
Ingress protection rating	IP20
Operating environment temperature range (°C)	0~50
Storage temperature range (°C)	-15~60
Relative humidity	5%~95%
Display & Communication interface	LCD+LED, RS485/Wi-Fi/CAN
Warranty	2 years
Cooling method	Smart Cooling
Topology	Transformer-less
Altitude	<2000m
Noise emission(typical)	<50dB
Standards & Certification	

SNA US 6K

- 240V/120V off-grid split-phase output
- Supports up to 16pcs in parallel
- Off-grid seamless switching
- AFCI protection integrated
- Dedicated port for generator, AC coupling or smart load management
- Breakers (Grid, Load, Gen and Battery) and PV switch are integrated



ModelSNA US 6K	
Input(PV DC)	
Max. PV input power (W)	8000(4000/4000)
Rated PV input voltage (V)	320
Number of independent MPPT inputs	2/(1:1)
PV input voltage range (V)	100~500
MPPT voltage range (V)	120~385
Start-up voltage (V)	100
Max. PV input current per MPPT (A)	17/17
Max. PV short-circuit current input per MPPT (A)	25/25
Battery	
Compatible battery type	Lithium-ion/Lead-Acid
Rated battery voltage (V)	48
Battery voltage range (V)	38.4~60
Max. charging/discharging current (A)	125/140
Max. charging/discharging power (W)	6000
Force wake up battery from PV function	YES
Force wake up battery from Grid function	YES
Grid	
Rated AC voltage(V)	110(L-N)/220(L1-L2); 120(L-N)/240(L1-L2)
Rated AC frequency (Hz)	50/60
Max. AC input current (A)	41A@220V/37.5A@240V
Max. AC input power (W)	9000
Max. continuous AC passthrough current (A)	50
GEN	
Rated GEN voltage (V)	120/240
Rated GEN frequency (Hz)	50/60
Rated GEN input current (A)	32
Rated GEN input power (W)	7370
UPS	
Rated output power (W)	6000
Rated output voltage (V)	110/220; 120/240
Rated output current (A)	28A@220V/25A@240V
Rated output frequency (Hz)	50/60
Surge power, duration	2Pn, <2s
Switching time	<7ms@Single/<20ms@Parallel
Wave form	Sine wave
THDV	<3%
Efficiency	
Max. MPPT efficiency	99.9%
Max. efficiency	93.0%
Max. charge/discharge efficiency	93.0%
Protection	
Over current/voltage protection	YES
AC short-circuit current protection	YES
Grid monitoring	YES
AC Surge protection	Type III
Battery reverse polarity protection	YES
DC switch	YES
Rapid shut down	YES
PV Arc Fault Detection	YES
AC & UPS breaker (Current/Voltage)	50A/230VAC
Battery breaker (Current/Voltage)	200A/80V/DC
GEN breaker (Current/Voltage)	50A/230V/AC
General	
Dimensions (W*H*D)	450*650*150mm / 17.7*25.6*5.9 in
Weight	24kg / 53lbs
Ingress protection rating	IP20
Operating environment temperature range (°C)	0~50
Storage temperature range (°C)	-15~60
Relative humidity	5%~95%
Display & Communication interface	LCD+LED, RS485/Wi-Fi/CAN
Warranty	2 years
Cooling method	Smart Cooling
Topology	Transformer-less
Altitude	<2000m
Noise emission(typical)	<50dB
Standards & Certification	
CSA STD. C22.2 No.107.1, UL STD.1741,FCC Part 15B	
*Note: 115A @48VDC (AC), 125A @44VDC (AC), 125A @48VDC (PV)	

SNA US 12-15K

- 240/120V off-grid split-phase output
- 2 MPPTs with 4 strings, Max. 24kW PV input
- Max. charging and discharging current: 250A
- AFCI Protection Integrated
- Dual AC output ports for multiple load connections
- Integrated Design with Load and Battery Breaker
- PV or AC or Generator wake up battery
- AC/Generator (input 240V or 120V) charge function
- Supports up to 16 units in parallel
- Separate GEN port
 - Up to 19.2kW Gen/AC coupling input
 - Auto generator start and stop control



Model	SNA US 12K		SNA US 15K
INPUT (PV DC)			
Max. PV input power (W)	24000 (12000/12000)		
Rated PV input voltage (V)	320		
Number of independent MPPT inputs	2/(2:2)		
PV input voltage range (V)	100-480		
MPPT voltage range (V)	120-440		
Start-up voltage (V)	100		
Max. PV input current per MPPT (A)	35/35		
Max. PV short-circuit current input per MPPT (A)	44/44		
Battery			
Compatible battery type	Lithium-ion/Lead-Acid		
Rated battery voltage (V)	48/51.2		
Battery voltage range (V)	46.4~60/38.4~60		
Max. charging / discharging current (A)	250		
Max. charging / discharging power (W)	12000		
Force wake up battery from PV and Grid function	YES		
Grid			
Rated AC voltage (V)	120/240; 120/208		
AC Start-up Voltage	90 (L-L)		
Acceptable Input Voltage Range (V)	130~280 (L-L)		
Rated AC frequency (Hz)	60/50		
Rated AC input current (A)	100A@240V		
Rated AC input power (W)	24000		
PF	0.99		
THDI	<5%		
Max. continuous AC passthrough current(A)	100		
GEN			
Rated GEN voltage (V)	120/240; 120/208		
Rated GEN frequency (Hz)	60/50		
Rated GEN input current (A)	62.5		
Rated GEN input power (W)	15000		
Rated GEN current of BYPASS relays (A)	90		
UPS			
Rated output power (W)	12000	15000@240V(with PV + Battery)	
Rated output voltage (V)	120/240; 120/208		
Rated output current (A)	50@240V	62.5@240V	
Rated output frequency (Hz)	50/60		
Surge power, duration	2Pn, 5s		
Switching time (UPS)	<10ms		
Wave form	Sine wave		
THDV	<3%		
Overload protection	5s@≥150% load /10s@110%~150% load		
Efficiency			
Max. efficiency	93.5%		
Max. charging / discharging efficiency	93.0%		
Max. MPPT efficiency	99.0%		
Protection			
PV reverse polarity protection(Y/N)	YES		
Over current / voltage protection(Y/N)	YES		
AC Short-circuit current protection(Y/N)	YES		
Grid monitoring(Y/N)	YES		
DC switch(Y/N)	YES		
DC Surge protection	Type III		
AC Surge protection	Type III		
Battery reverse polarity protection (Y/N)	YES		
RSD / AFCI monitoring (Y/N)	YES		
UPS/Battery breakers integrated	YES		
General			
Dimensions (W*H*D mm)	530*830*150mm / 17.72*25.59*5.9 in		
Weight	47.5kg / 104.72lbs		
Ingress protection rating	IP20		
Operating environment temperature range(°C)	0~45		
Storage temperature range(°C)	-15~60		
Relative humidity	5% ~ 95%		
Display & Communication interface	LCD+RGB, RS485 / Wifi / CAN		
Warranty	2 years		
Cooling method	Smart cooling		
Topology on AC / Battery side	Transformer-less / Transformer		
Altitude (m)	<2000		
Noise emission (typical)	<50dB		
Standard & Certification			
CSA STD.C22.2 No.107.1,UL1741			

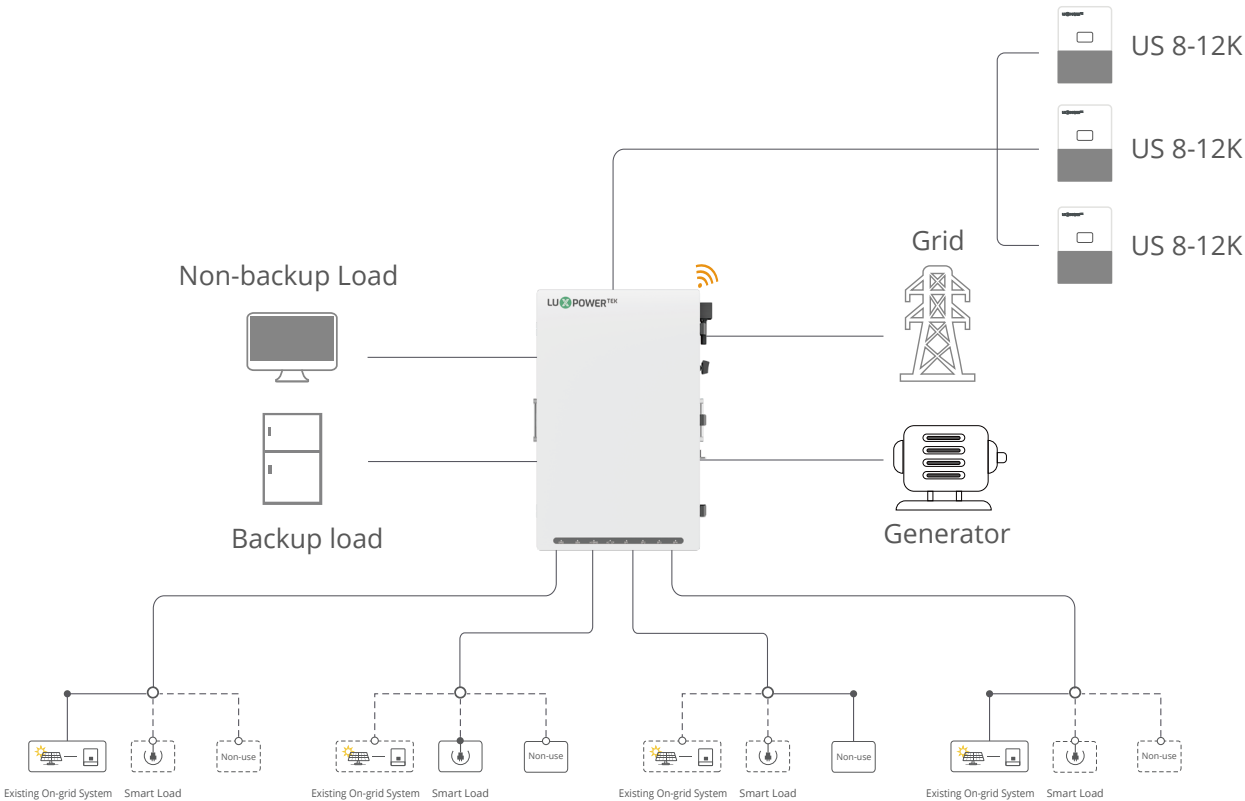
PowerHub

Key Features:

- **Centralized Control:**
PowerHub acts as the central controller for all home power sources, efficiently integrating the grid, existing grid-tied systems, generators, and directly connecting to various types of loads to supply uninterrupted electricity to your home.
- **Seamless Transition:**
Automatically transitions your home’s power supply from grid power to backup power, ensuring that essential appliances like refrigerators and network routers remain unaffected during grid outages.
- **Flexible Connections:**
With four independent smart ports, PowerHub offers versatile connectivity options for integrating with existing systems or directly powering loads.
- **Enhanced Reliability:**
By managing and optimizing multiple power sources, PowerHub enhances the reliability and stability of your home’s energy supply.

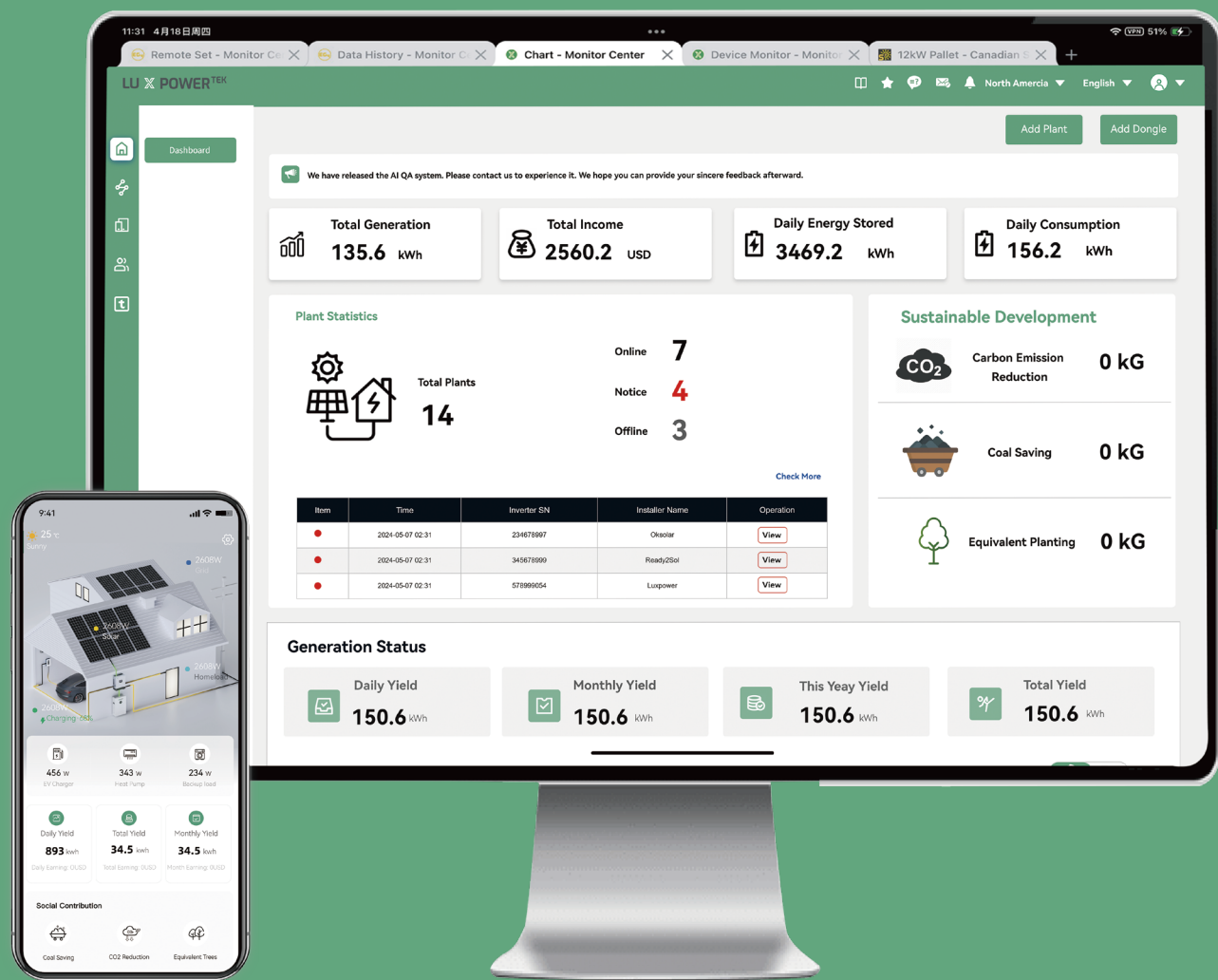


Performance specifications		PowerHub
Port Name	Port Qty	Max. Current
For Hybrid Inverter	3	70
For Smart port	4	125
		80
		60
		60
For backup load	1	200
For Non-backup load	1	200
For Generator	1	125
For Grid	1	200
General Data		
Operating Ambient Temperature Range	-40°C to 60°C -40°F to 140°F	
Max. Operating Altitude	2000 m(6561 ft)	
Relative Humidity	0 ~ 100%	
Outdoor Rating	NEMA 4X	
Dimensions	500*800*178mm / 19.7*31.5*7 in	
Weight	25kg / 55 lbs	
Mounting	Wall-mounted	
UL1741,UL869A,UL916,FCC Part15B		



LUXPOWERTEK MONITORING CLOUD

Redefining energy management efficiency through AI empowerment



LuxBot Intelligent Customer Service

- 24/7 real-time multilingual support;
- Resolves user inquiries rapidly through Natural Language Processing (NLP), offering device diagnostics, energy consumption analysis, and operational guidance.

AI-Adaptive Operation Modes

- Intelligent Charging/Discharging Strategy: Dynamically optimizes cycles based on load forecasting and battery health monitoring to extend the lifespan of energy storage systems;
- Weather Optimization Algorithm: Integrates real-time meteorological data to automatically adjust energy dispatch (e.g., solar-storage coordination), ensuring system stability during extreme weather conditions.

For APP Download

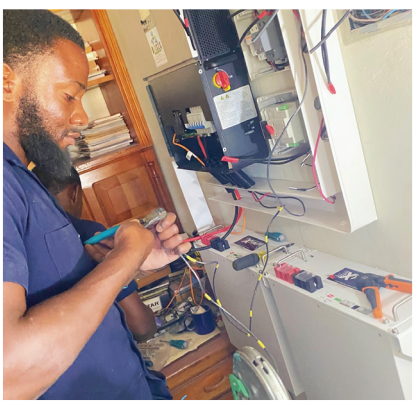


Android



iOS

2017
|
2025



Luxpower energy storage systems are widely adopted worldwide, providing stable and efficient solutions for homes and businesses. The smart monitoring system enables remote management, ensuring users can optimize energy usage anytime. With reliable performance and professional support, Luxpower empowers customers toward a sustainable energy future.