

GPRS/4G Dongle User Manual

Note:

The end user needs to apply to your installation personnel to register a Monitor account, or you can register, but please remember to obtain their customer code from the installation personnel or distributor. The installation personnel and distributors need your higher-level distributor to register monitor access for you, and you will receive your unique customer code from them! When registering an account for your customers, you can set a customer name for them.

APP Download: LuxPower



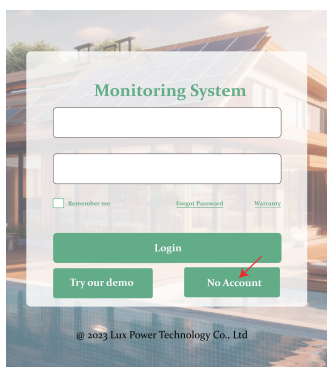
Android in Google Play



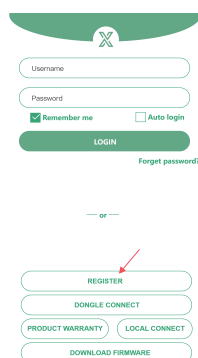
IOS in Apple APP Store

1. Register an account

Step 1. Register Monitor account for end user, please visit <http://sery-er.luxpowertek.com>, or download the 'LuxPower' APP to do that. If you are distributor or installer, please contact your upper-level distributor to get an account, or you can contact info@luxpowertek.com.



WEB



APP

Step 2. Filling in important information truthfully(with*)

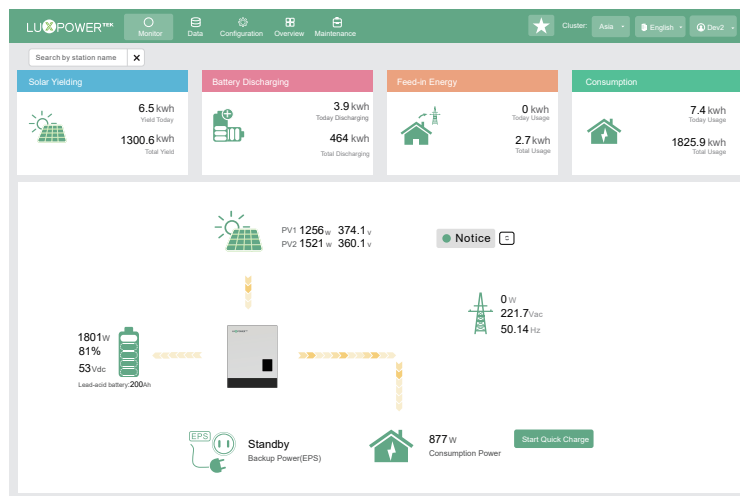
- Customer code: it is the code of your distributor or installer, please contact them to get their customer code.
- Dongle SN: showed on the label of GPRS/4G shell as below:



* Cluster	Asia
* Username	Username
* Password	Password
* Repeat password	Repeat password
Nickname	Nickname
* E-mail	E-mail
Tel number	Tel number
* Station name	Station name
* Daylight saving time	<input type="radio"/> Yes <input checked="" type="radio"/> No
* Continent	Asia
* Region	East Asia
* Country	China
* Timezone	-
Address	Address
* Customer code	Customer code
* Dongle SN	Dongle SN
* Dongle PIN	Dongle PIN

Register Back to login page

Following the steps below, after completing all the dongle configuration, log in to our monitoring system. You can access the parameters and information of the PV system from the "monitor" page, including real-time system status and energy data.

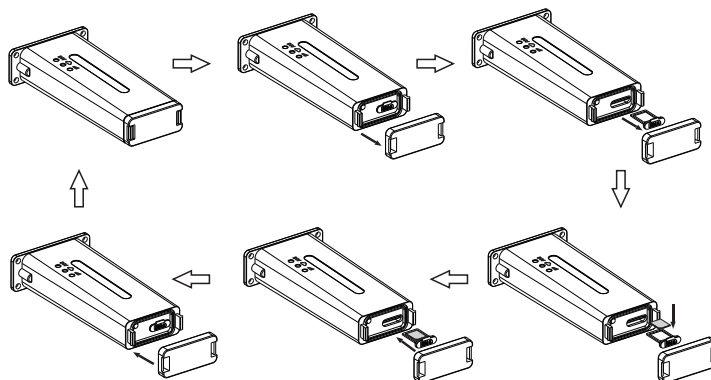


2. SIM card installation

Step 1. Press the hooks on the bottom of the dongle with your fingers to remove the bottom cover.

Step 2. Pull out the card holder, insert the SIM card, then press the card holder back into the dongle.

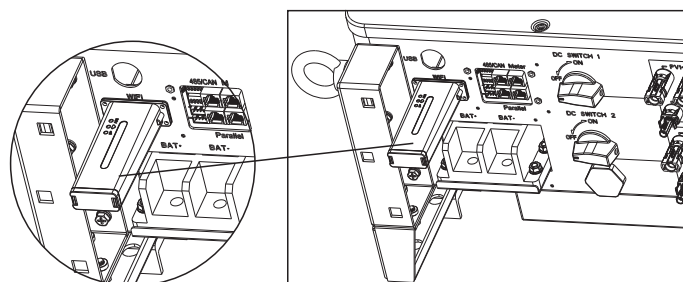
Step 3. Replace the bottom cover and secure it to the dongle.



3. Electrical connection

Step 1. Take off the top cover of the machine labeled "WiFi".

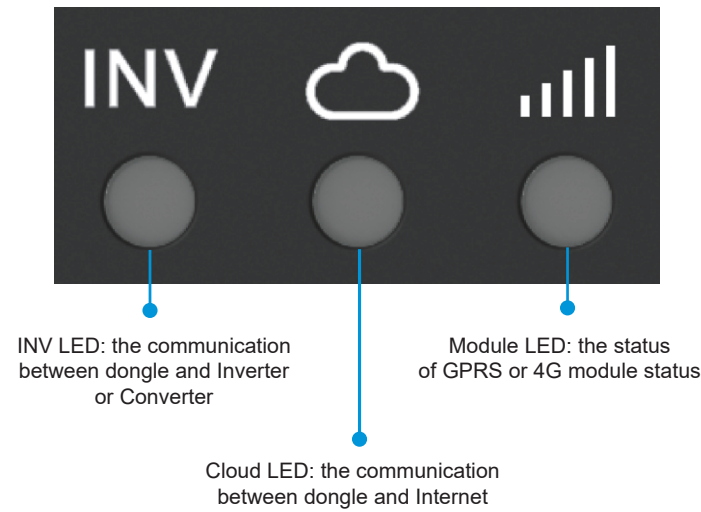
Step 2. Insert the dongle into the machine and secure it with the four screws.



4. Operate GPRS/4G Dongle

LED light status description:

The lighting sequence of the LEDs is as follows: Module > Cloud > INV.



Step 1. Once the GPRS/4G dongle is installed, power on the inverter or converter.

Step 2. When installing the GPRS/4G dongle for the first time, the LED of the dongle will illuminate as follows:

LED status explanations can be found in the appendix Troubleshooting.

Button on the bottom

If there's a connectivity issue, press and hold the button to reset the device, allowing it to reboot. To do this, open the bottom cover of the device. Inside, you'll find the SIM card holder on one side, and on the other side, there is a reset button. Press the button for more than 3 seconds to initiate the reboot of the GPRS/4G dongle.



Appendix: troubleshooting

LED status	Working status	Troubleshooting
All lights solid Green	Communication is good	
INV LED flashing	Communication with inverter or converter is not good	Please check the connection between inverter or converter.
INV LED off	The connection between dongle and inverter or converter is abnormal	1. Press the button for more than 3 seconds to restart the dongle. 2. Try registering with another new dongle.
Cloud LED flashing	Internet communication is not good	1. Check if GPRS/4G is registered. 2. Check SIM card status for looseness, damage, or no signal(included)
Cloud LED off	The connection between dongle and inverter is abnormal	1. Press the button for more than 3 seconds to restart the dongle. 2. Try registering with another new dongle.
Module LED off	Module is abnormal	1. Press the button for more than 3 seconds to restart the dongle. 2. Try registering with another new dongle.